

TOWNSHIP OF BRANCHBURG

Somerset County

Master Plan

Public Workshop

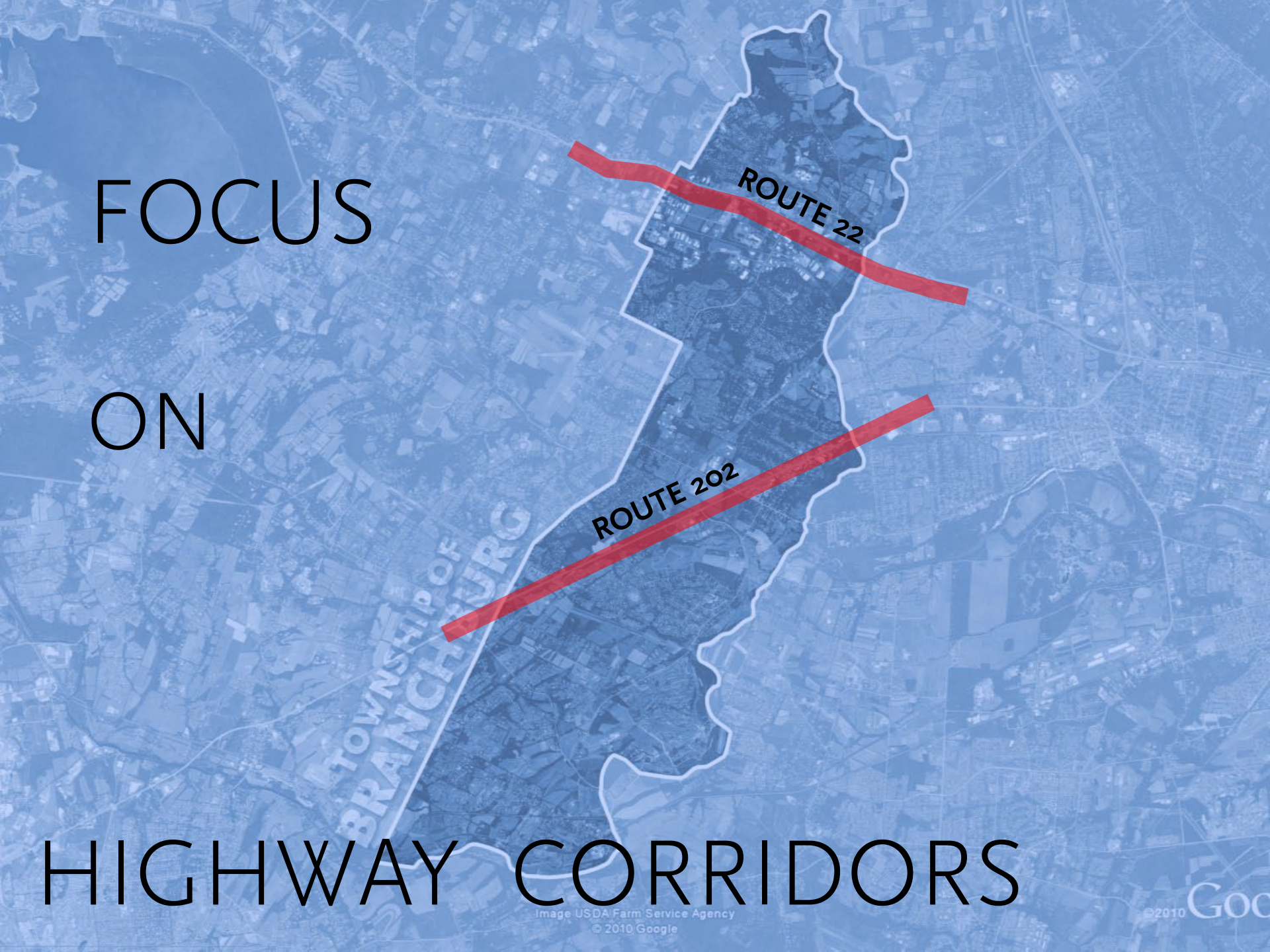
March 30, 2011

TOWNSHIP OF
BRANCHBURG

FOCUS

ON

HIGHWAY CORRIDORS



- Overview: Rt. 202 Study

- Rt. 202 Issues

 - NJ Transit Park and Ride Alternatives

 - OL Zoning

 - Alternative Energy Facilities

 - West County Drive/Chubb Way Connection

- Rt. 22 Issues

 - Industrial Zone South of Rt. 22/Variances

 - Meister Avenue Connection

 - Rt. 22 @ France Drive

 - Billboards/Sign Ordinance

- Other Issues

Rt. 202 Aerial and Image Locations



Rt. 202 Multimodality Plan






Recommendations for Improvements

Old York Road South

DEFICIENCIES: POOR LEVEL OF SERVICE, HIGH CRASH LOCATION

RECOMMENDATIONS: MEDIUM TERM- RECONFIGURE & SIGNALIZE INTERSECTION

LEGEND:

	PROPOSED TRAFFIC SIGNAL
	REMOVE LEFT-TURN LANES
	ROADWAY WIDENING
	PROPOSED TRAFFIC MARKINGS
	TRAVEL DIRECTION

BRANCBURG TOWNSHIP



Rt. 202 Aerial and Image Locations

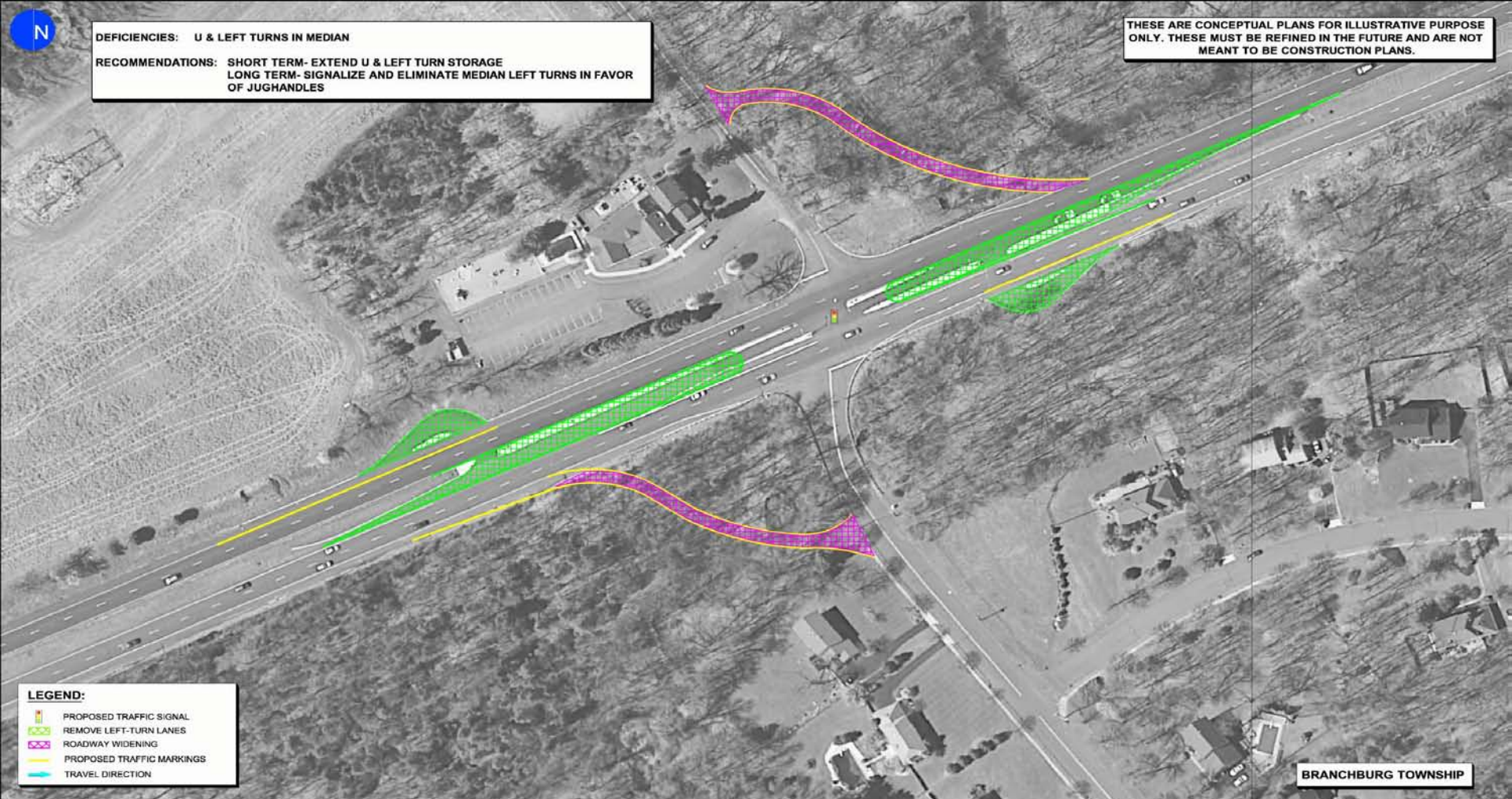


B

Rt. 202 Multimodality Plan

Recommendations for Improvements

Holland Brook Road

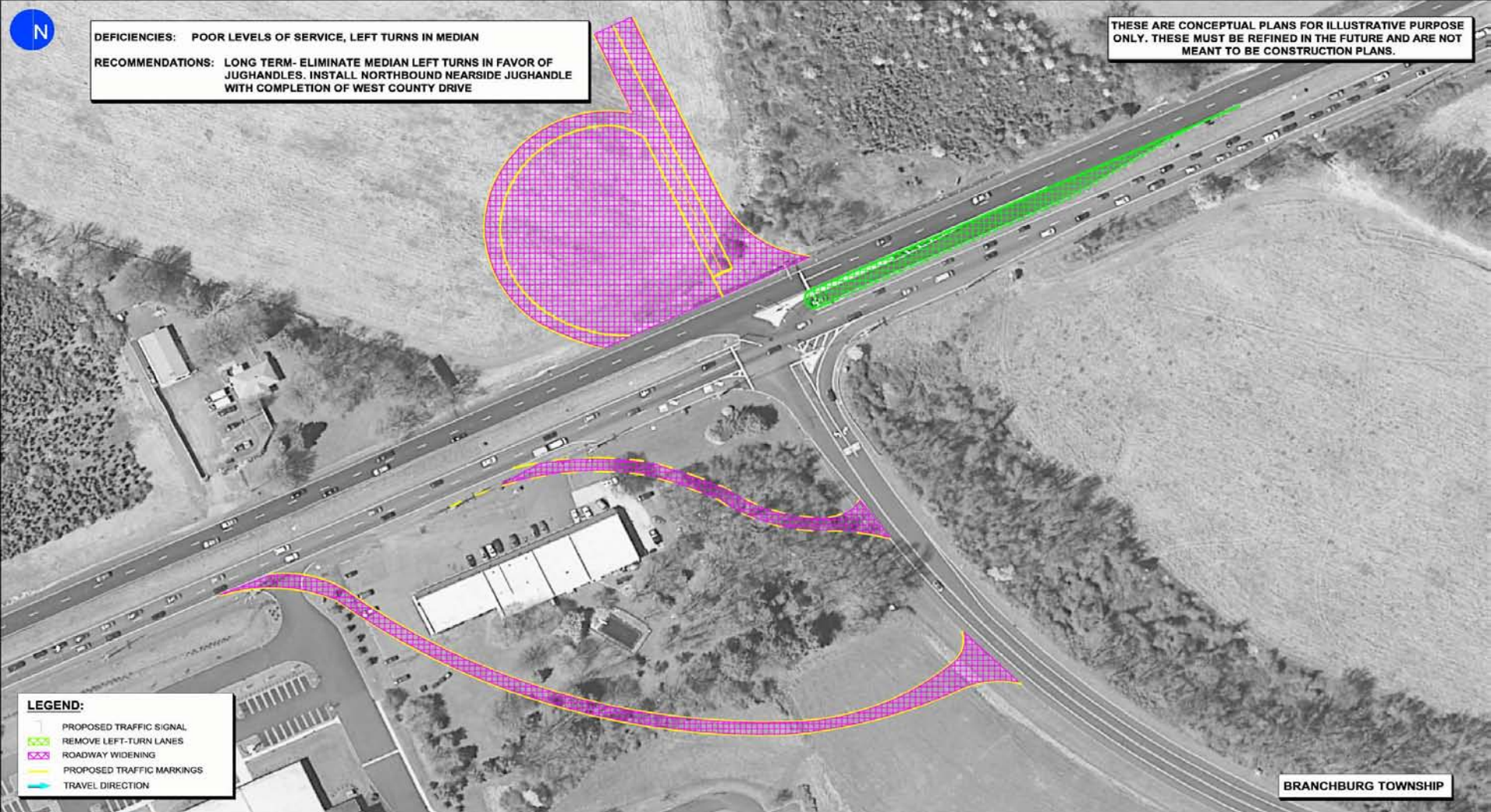


Rt. 202 Aerial and Image Locations

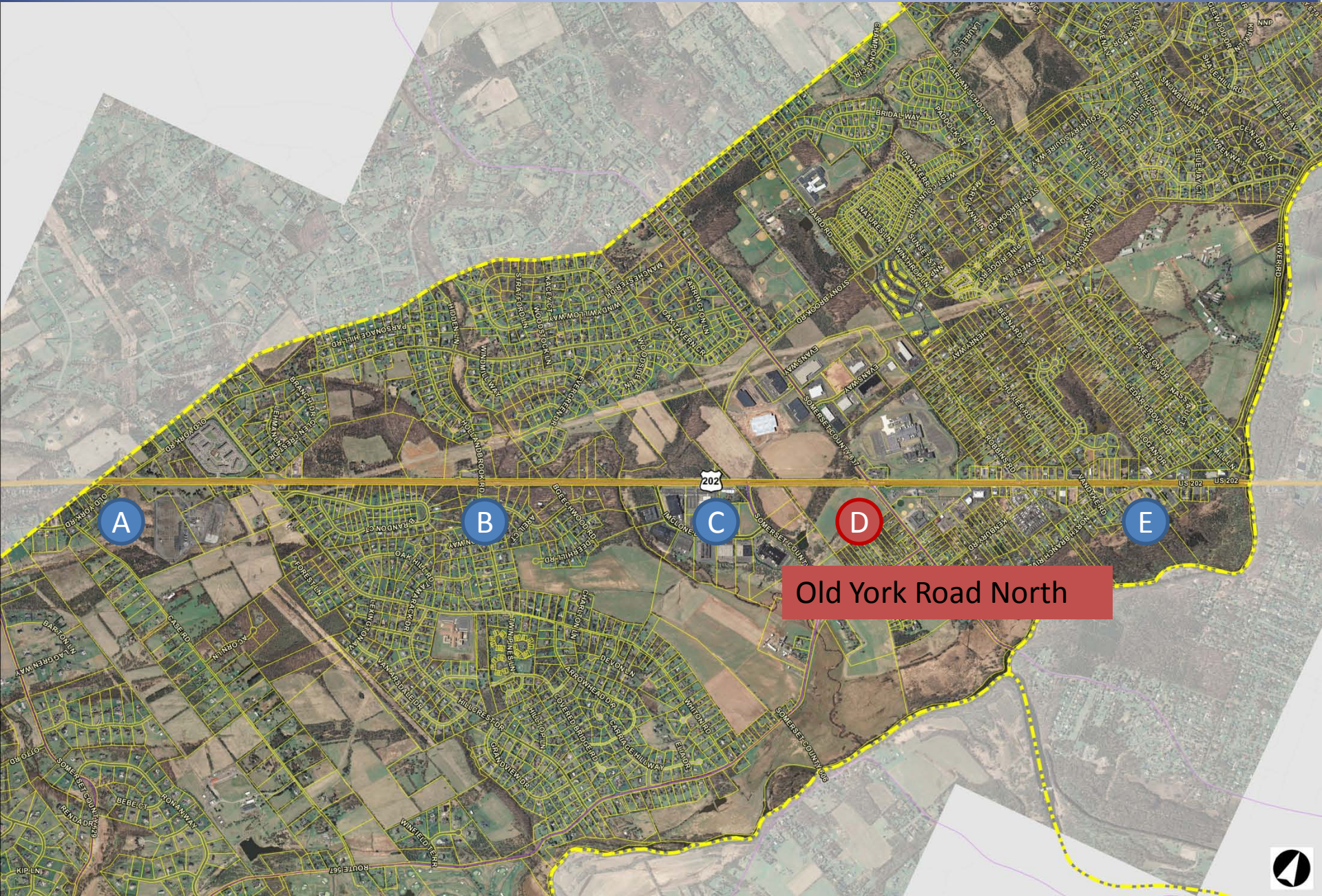




Rt. 202 Multimodality Plan Recommendations for Improvements SC 646 West County Drive



Rt. 202 Aerial and Image Locations

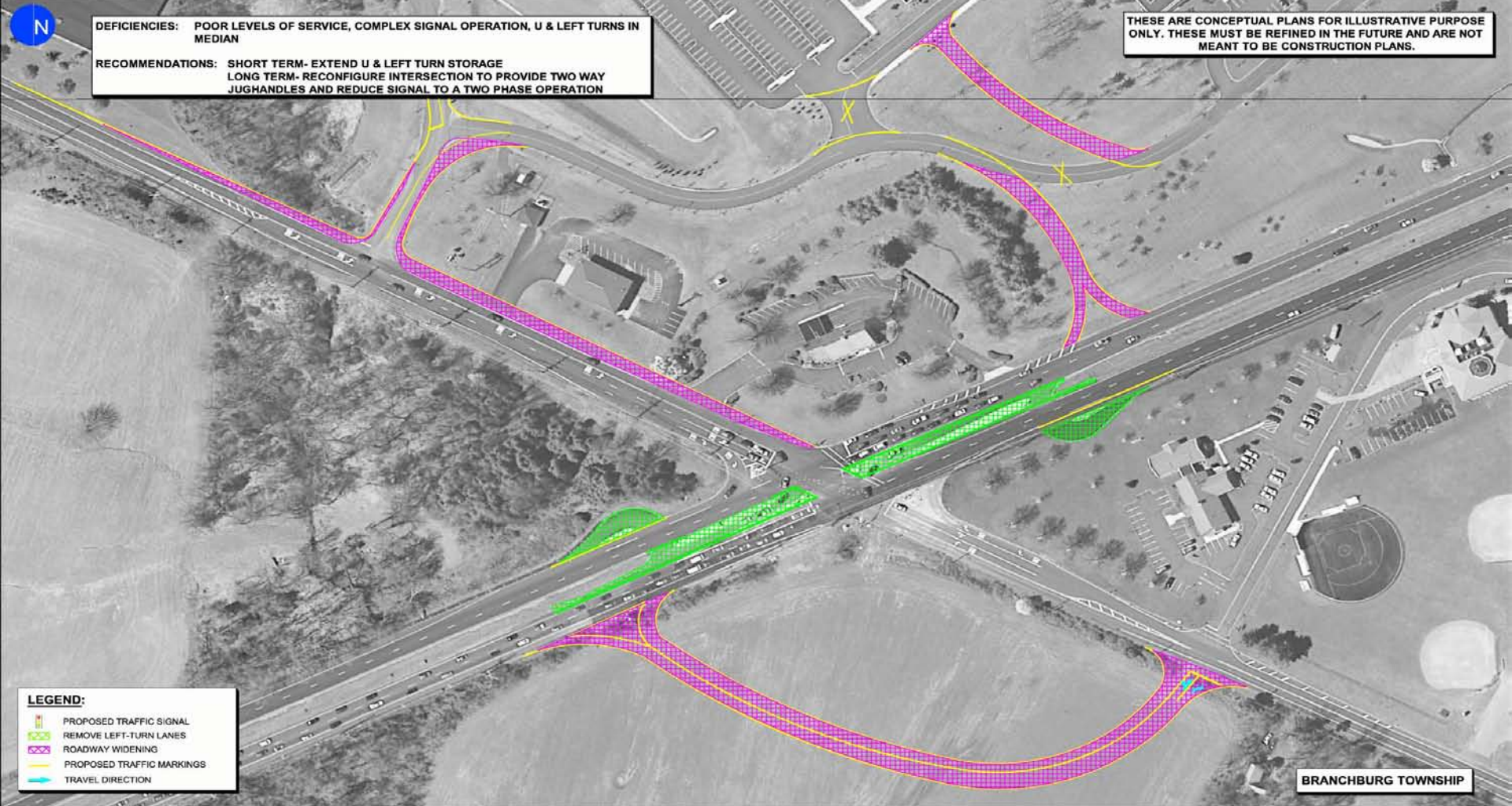


D

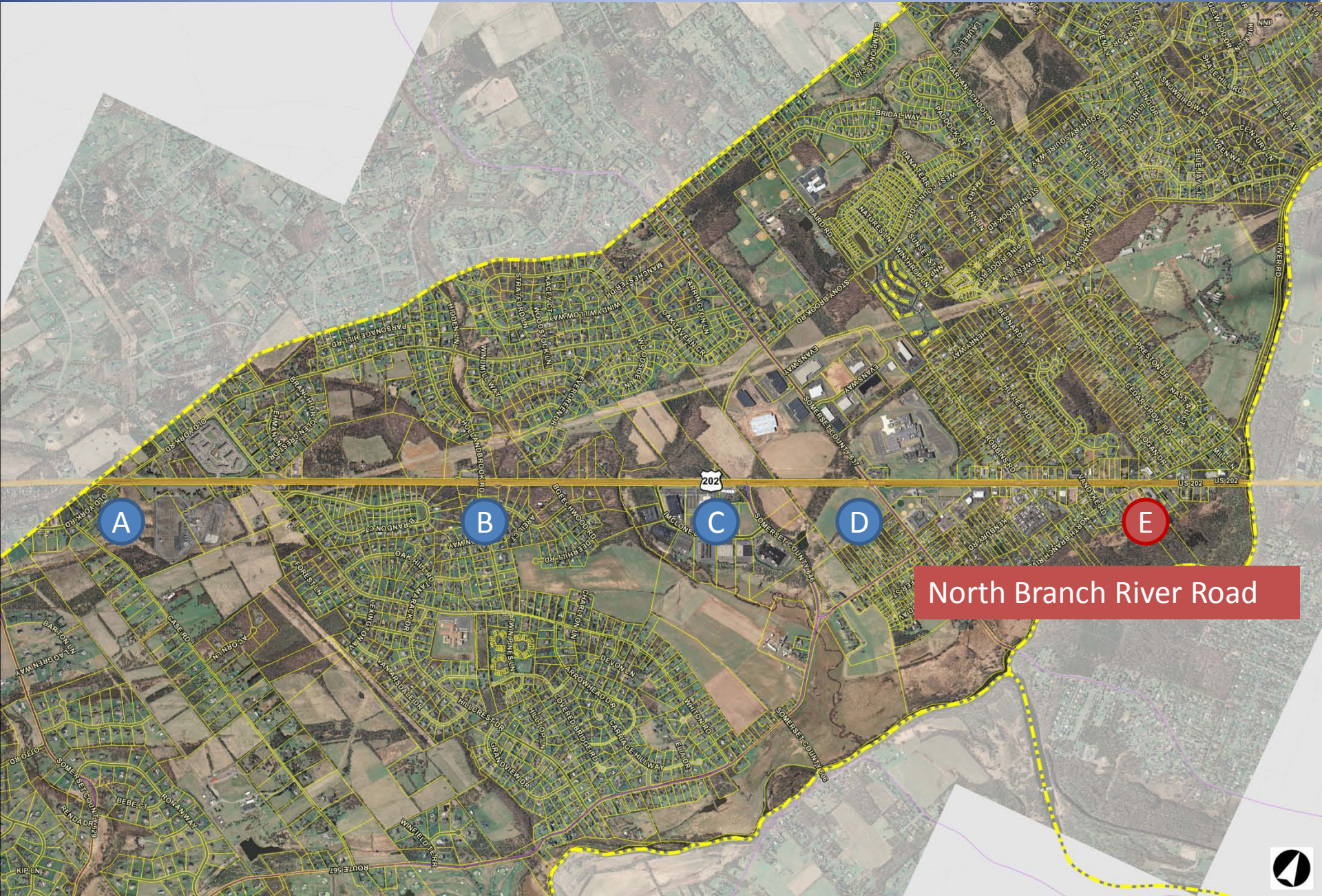
Rt. 202 Multimodality Plan

Recommendations for Improvements

Old York Road North



Rt. 202 Aerial and Image Locations



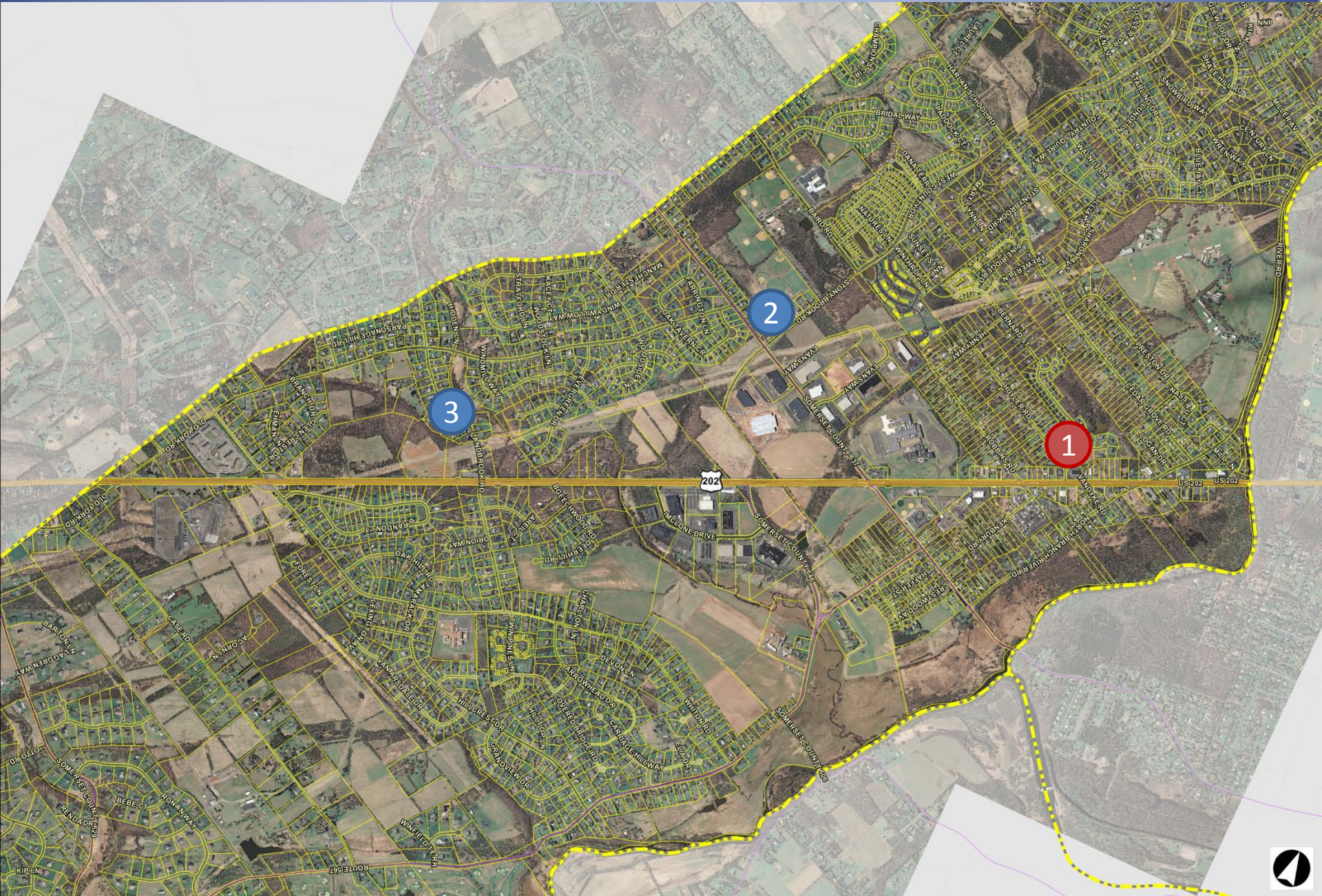
Rt. 202 Multimodality Plan

Recommendations for Improvements

North Branch River Road / Park & Ride



Rt. 202 Aerial and Photo Locations



NJ Transit Park & Ride



Small generic sign

Access from Rt. 202 is dangerous.

Commuters must cross in front of the bus when leaving the shelter.



1

NJ Transit Park and Ride



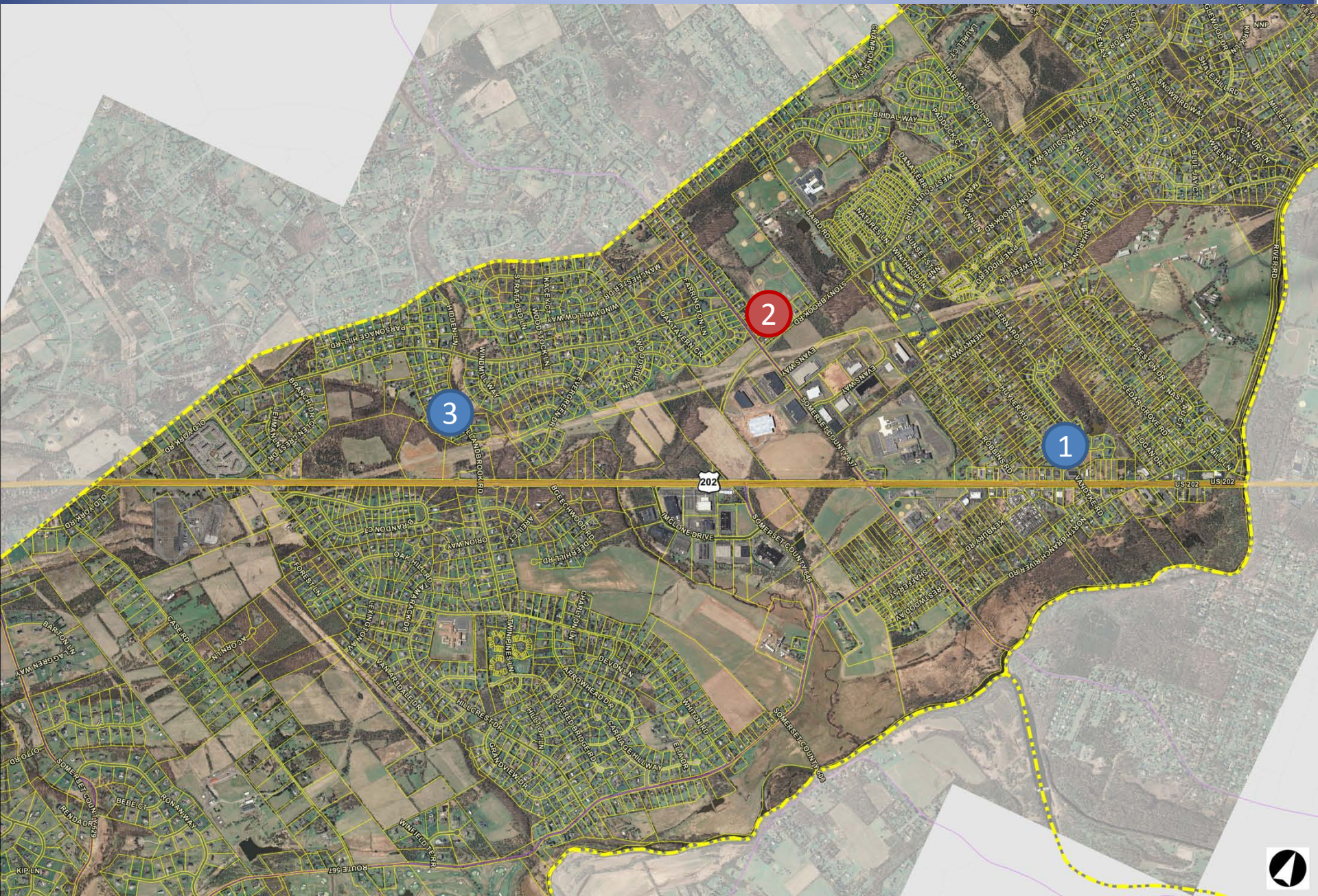
1



Possible Redevelopment for Park and Ride



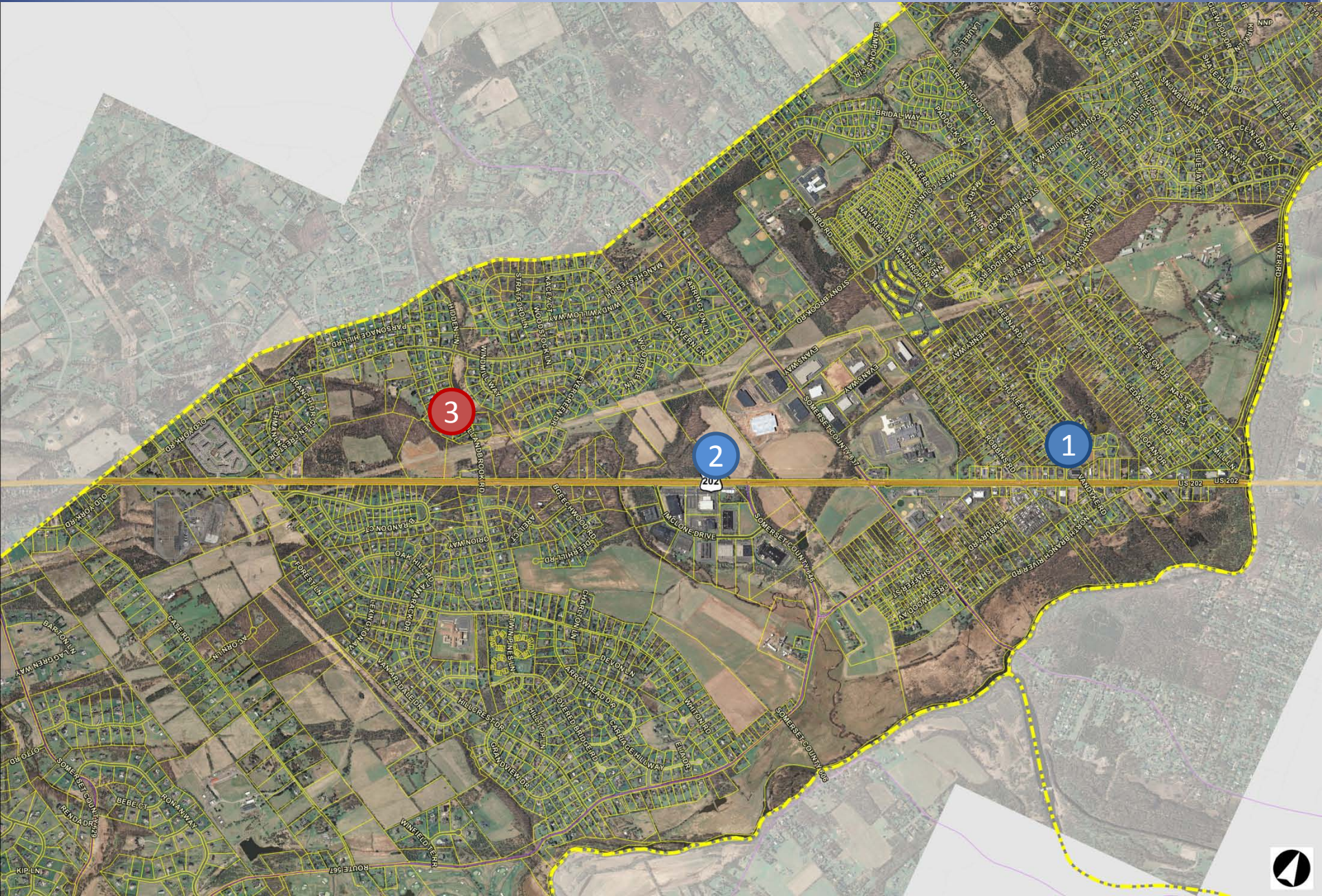
Rt. 202 Aerial and Photo Locations



West County Drive Connection



Rt. 202 Aerial and Photo Locations



3

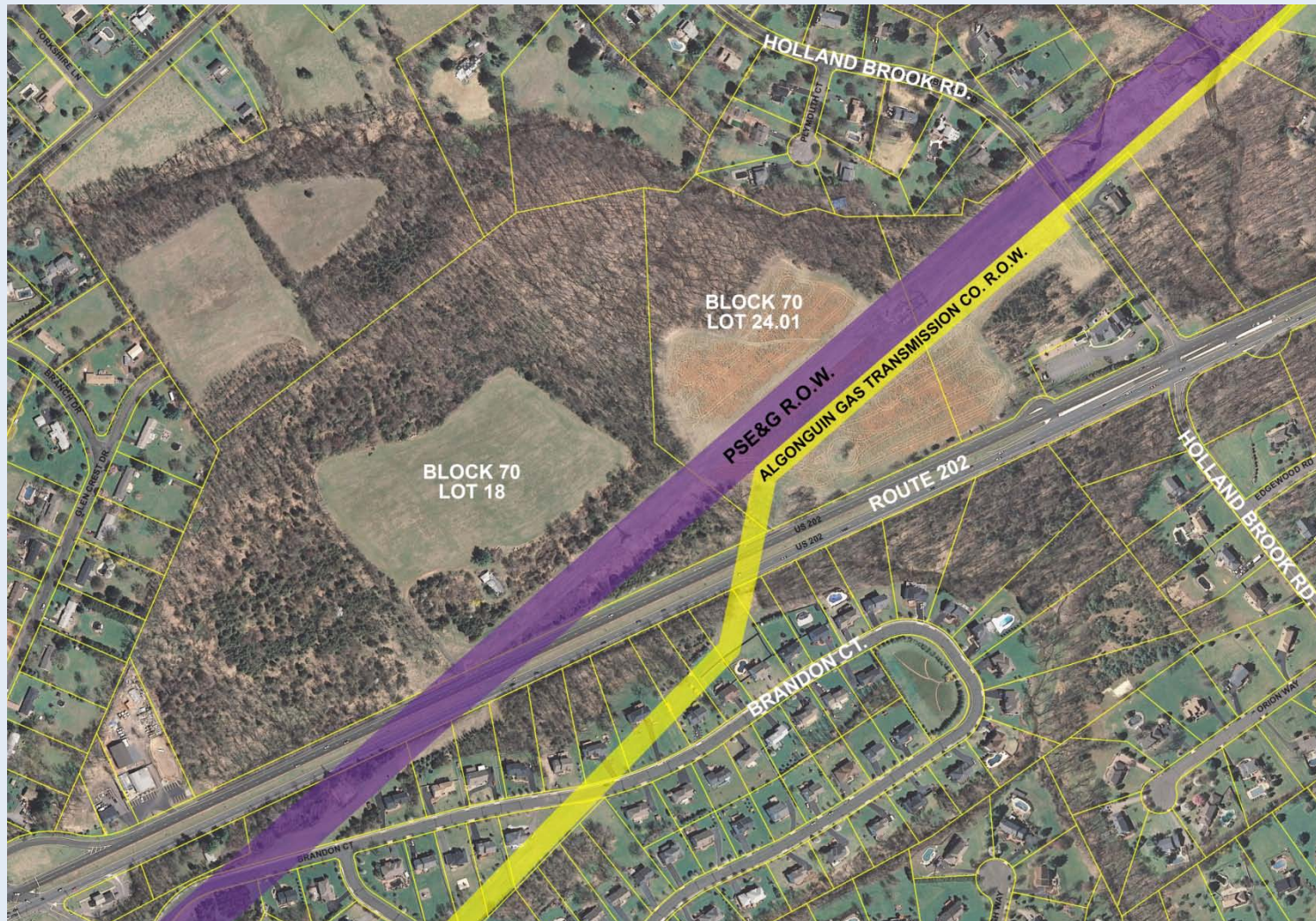
Office Laboratory Zoning District

Constrained by High Voltage Power Line and Natural Gas Line
One Variance Request for Residential – withdrawn
Access concerns

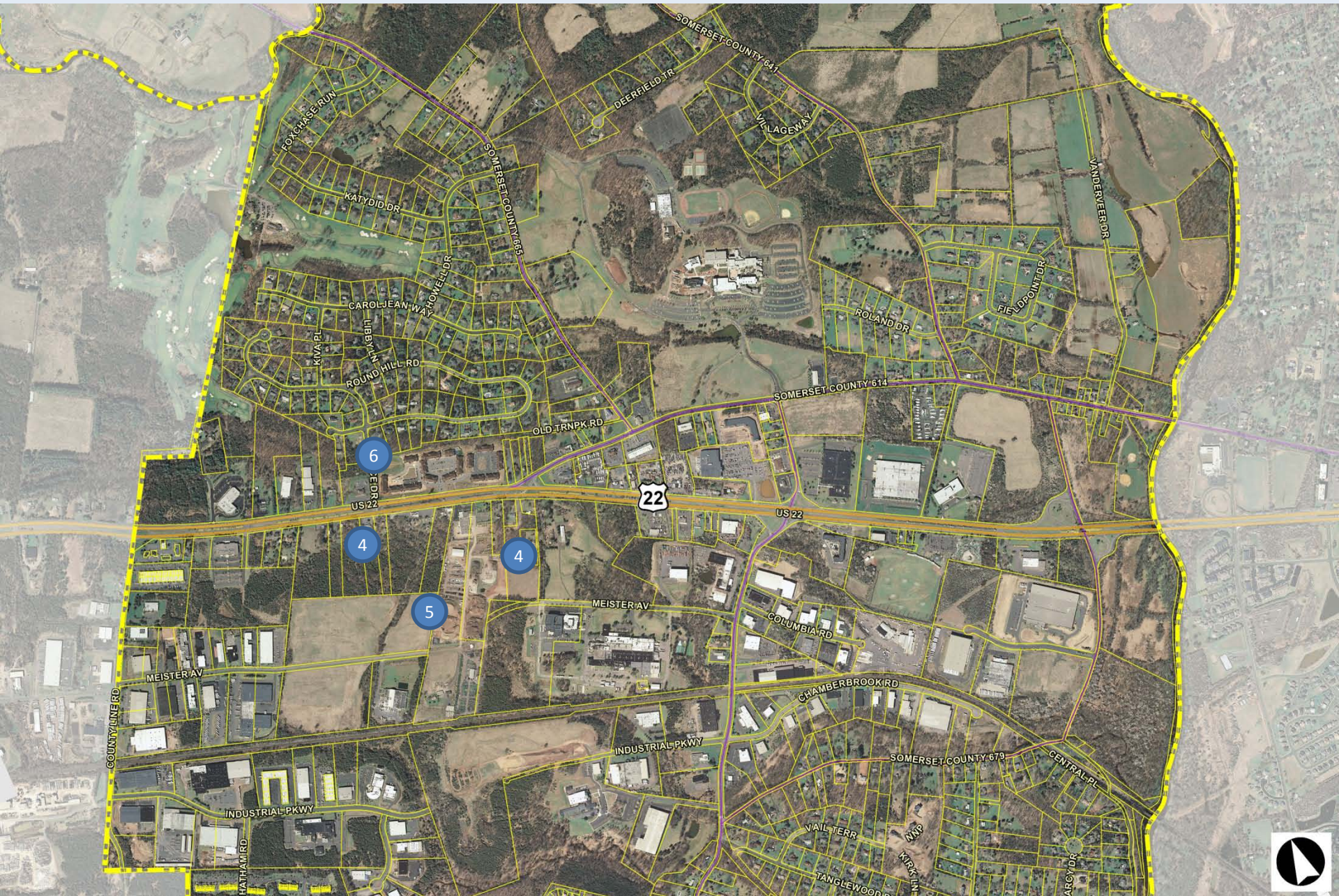


3 Office Laboratory Zoning District

Constrained by High Voltage Power Line/ Natural Gas Line
Access concerns



Rt. 22 Aerial/ Photo Locations



Industrial Zone I-1 South of Rt.22



Meister Avenue Connection



Vacant Industrial Zone Land Meister Avenue
South of Rt. 22

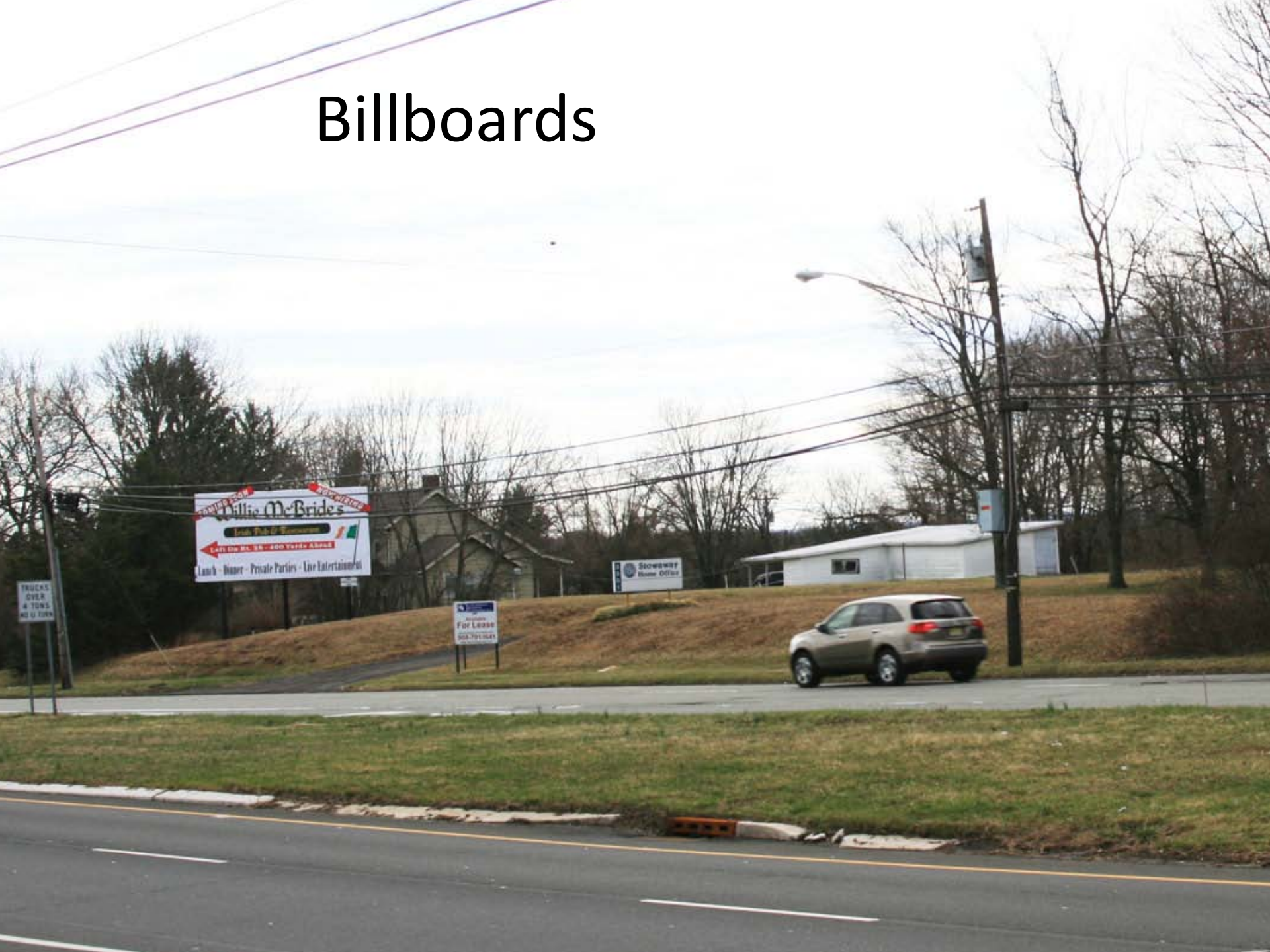


Meister Avenue Connection

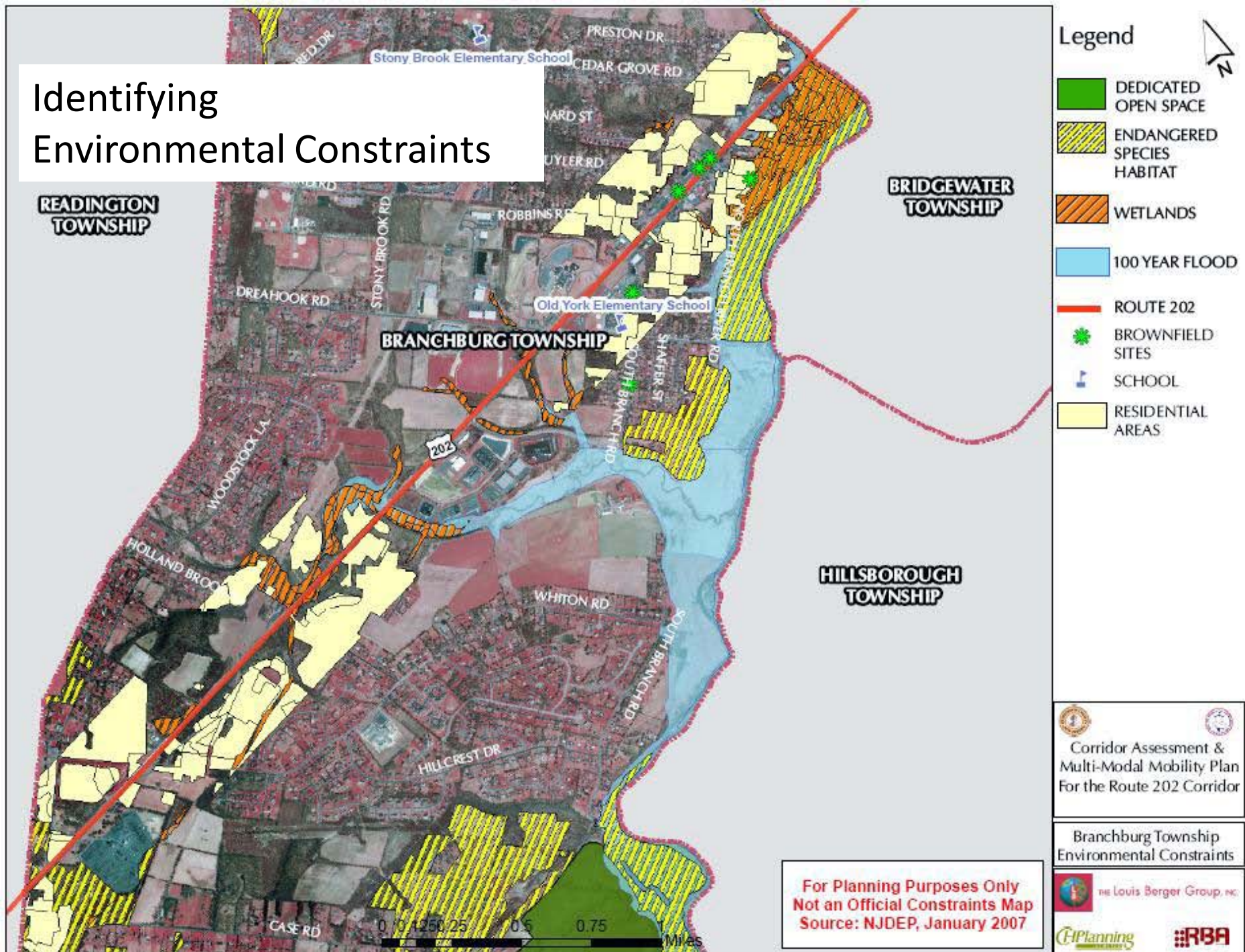




Billboards



Identifying Environmental Constraints





Locating Alternative Energy Facilities

OTHER ISSUES

TOWNSHIP OF
BRANCHBURG

ROUTE 22

ROUTE 202

Thank you